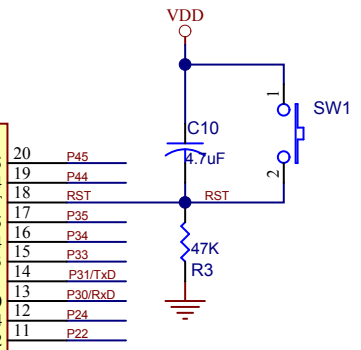
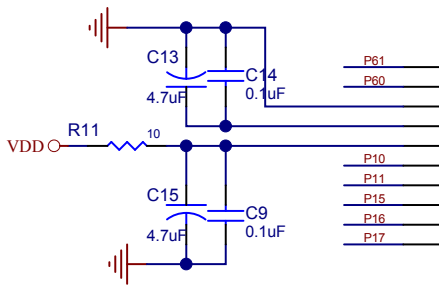
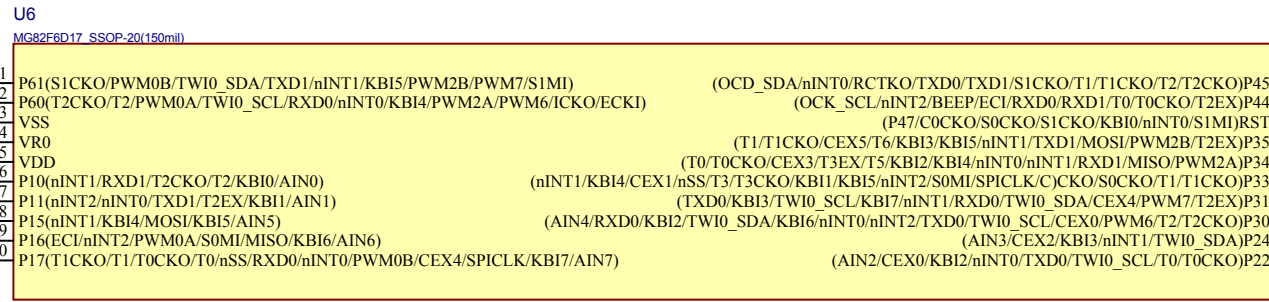


ICE/ICP Interface

Text:
RST
GND
SDA
VCC
SCL
CLK



megawin 笙泉科技股份有限公司
make you win

http://www.megawin.com.tw TEL:886-3-5601501 FAX:886-3-5601510

Document Number: TH194_MG82F6D17_SSOP20_EV_V10.SchDoc Rev

Size: A4	Date: 2019/3/5 星期二	Sheet
----------	--------------------	-------



make you win

MG82F6D17

SSOP20_V10

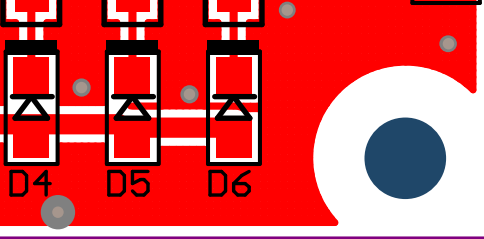
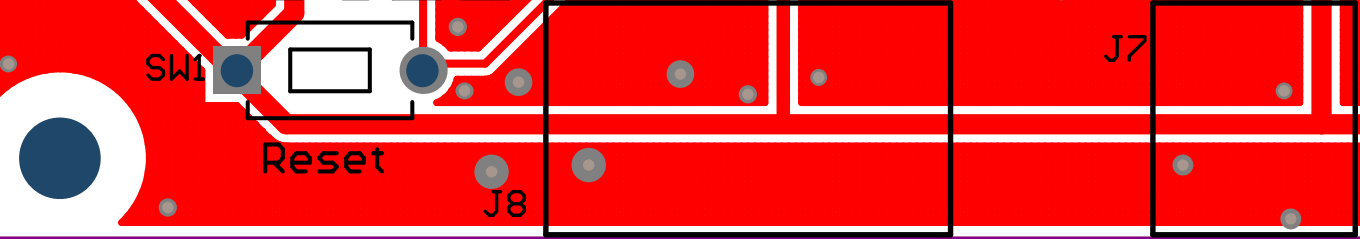
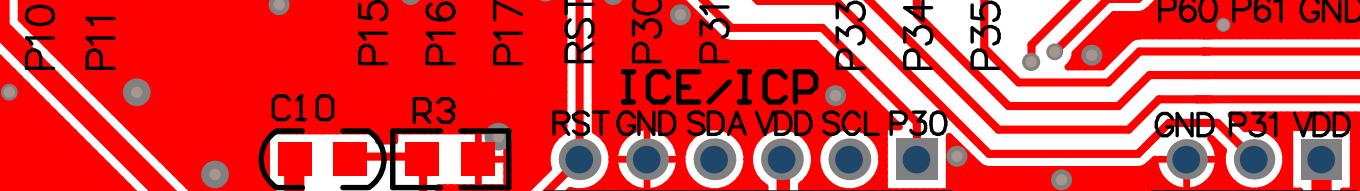
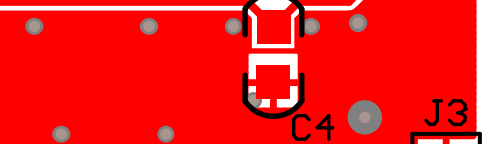
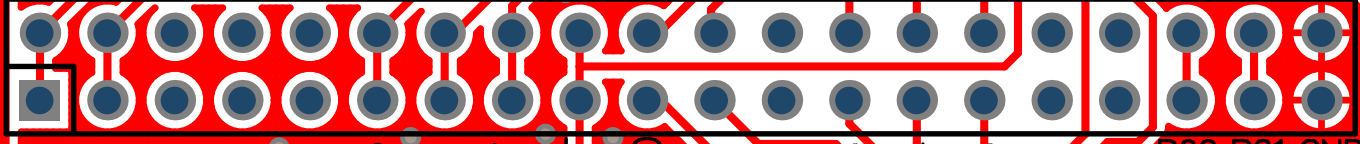
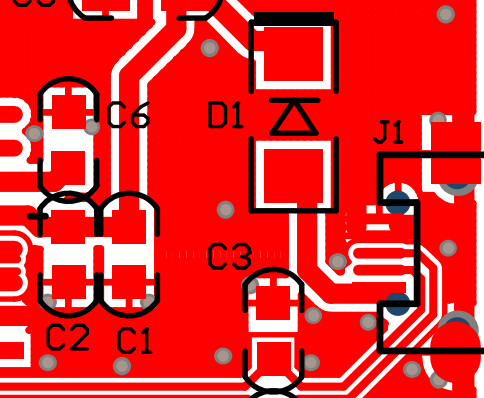
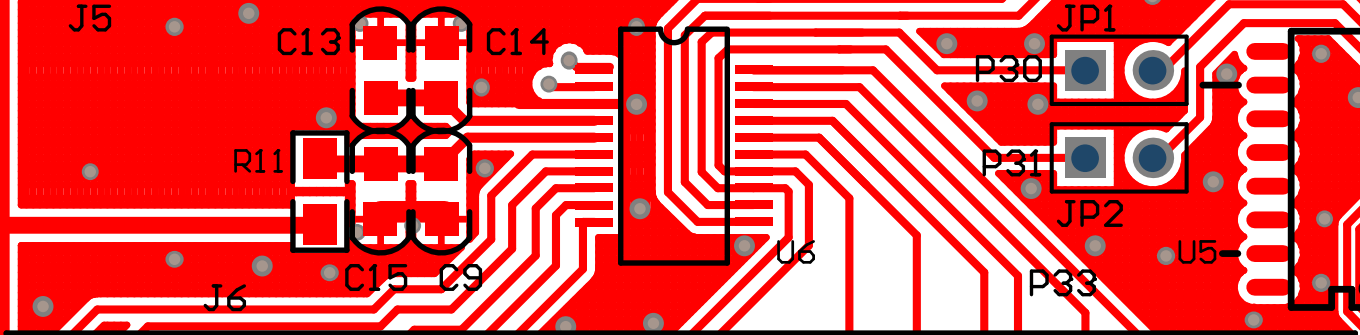
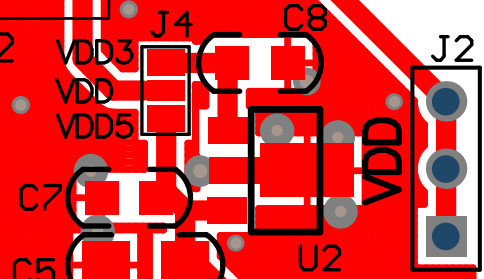
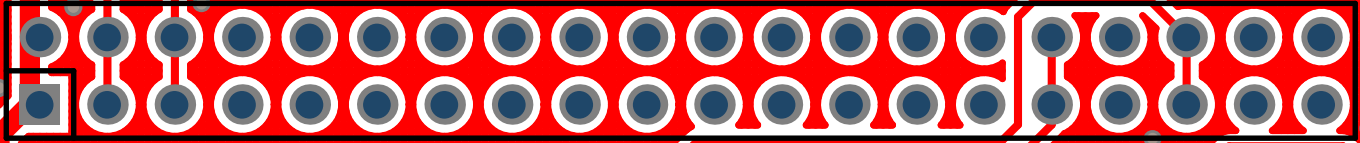
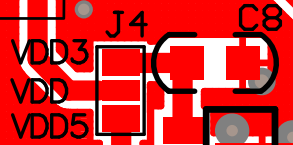
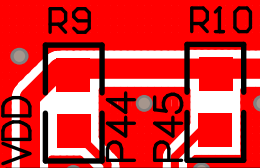
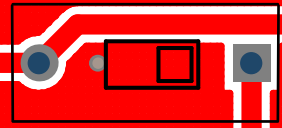
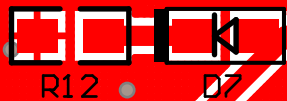
Ev Board

TH194A

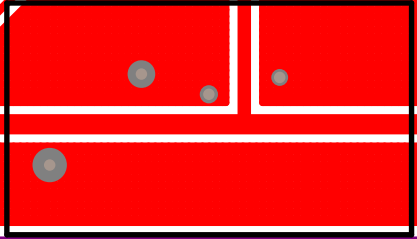
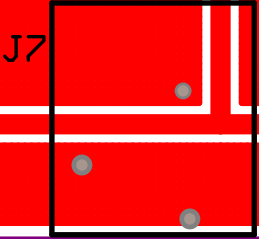
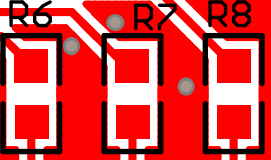
Power Off Power On

53.59mm

72.39mm



Reset



















































































































































































































































































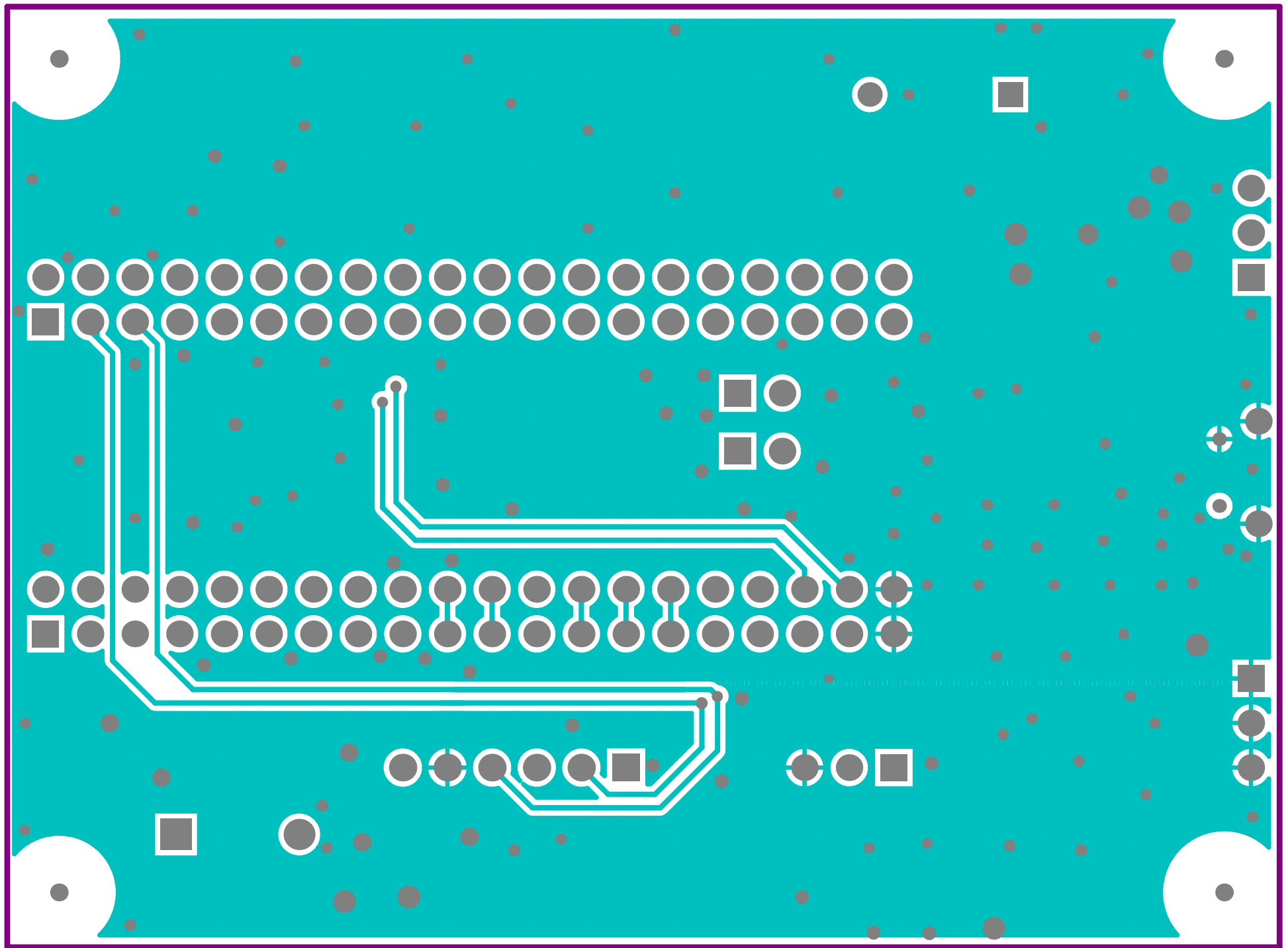








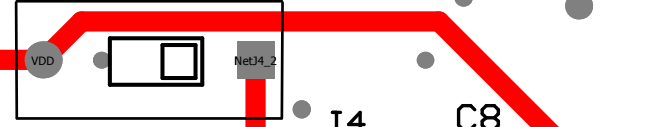
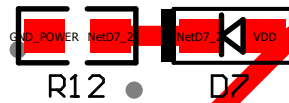




MG82F6D17
SSOP20_V10
Ev Board
TH194A

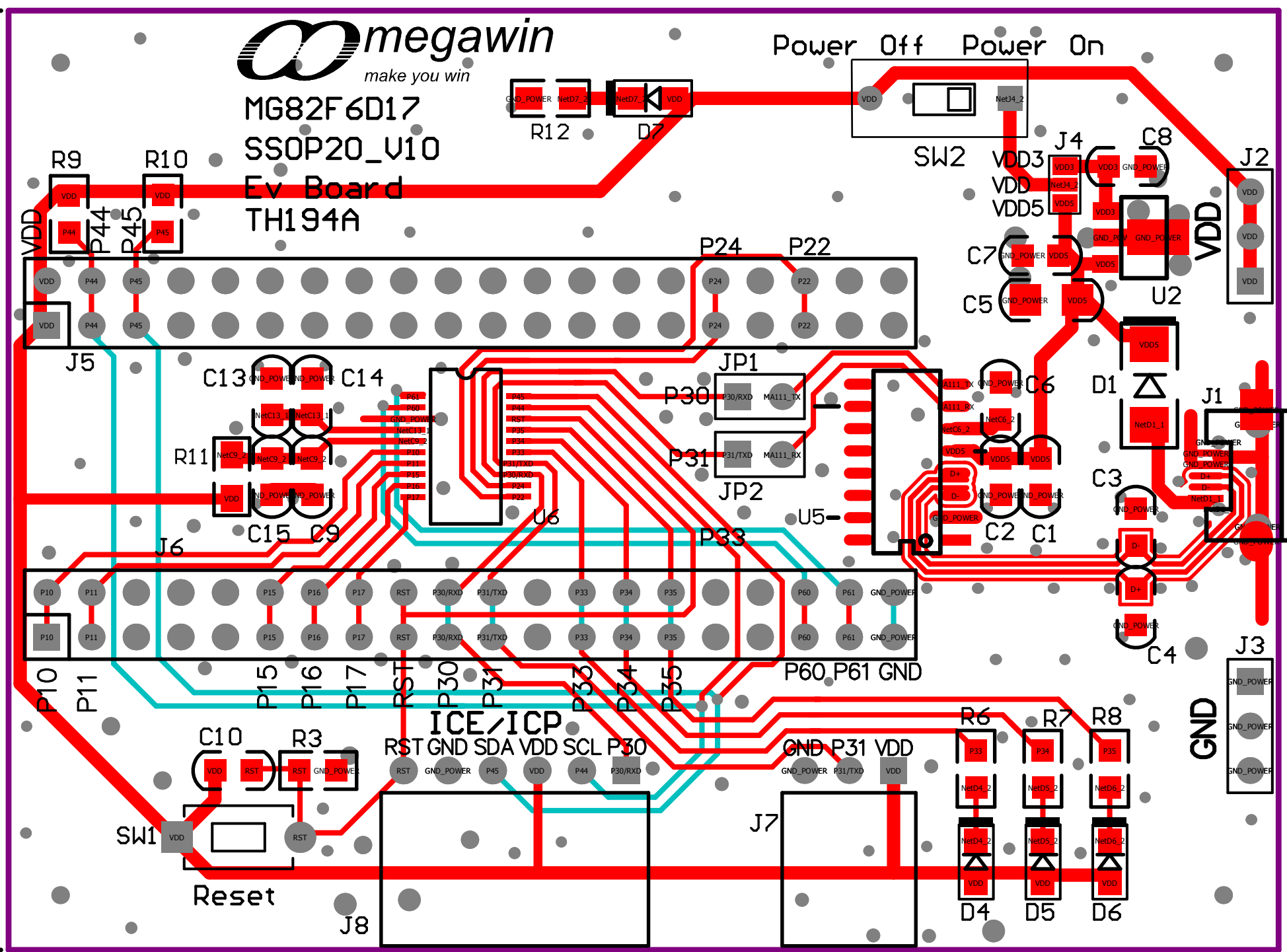
Power Off Power On



53.59mm



72.39mm



GND

