

This document is the property of Amphenol Corporation and is delivered on the express condition that is not to be disclosed, reproduced or used, in whole or in part, for manufacture or sale by anyone other than Amphenol Corporation without its prior consent, and that no right is granted to disclose or to use any information in this document.

The marking on this product doesn't contain environmental hazardous materials per Material Specification SS-00259 for Sony GP compliant or per directive 2011/65/EU for RoHS compliant.



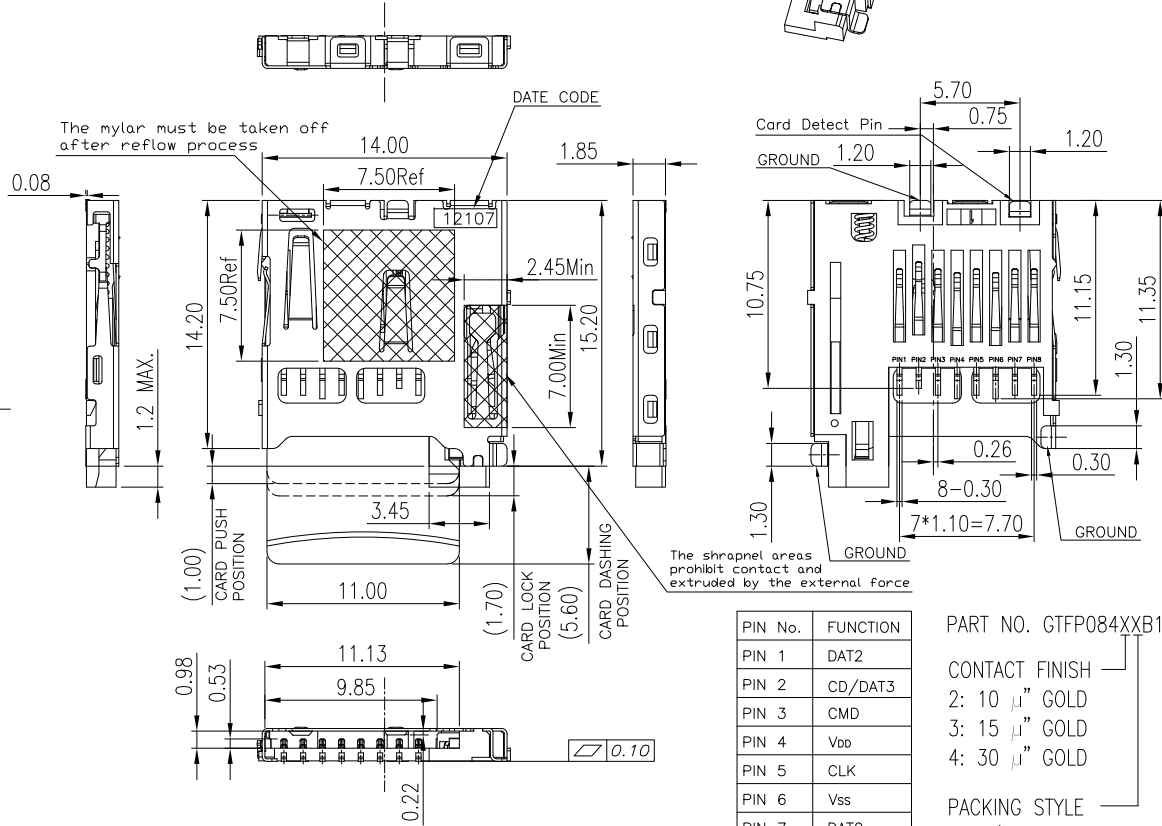
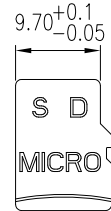
ORIGINAL



REVISIONS				
SYM	ECN No.	DESCRIPTION	DATE	APPROVED
A	NE-16112	APPROVED REVISION	05/12/2016	Arron Lin

NOTES:

- INSULATOR: HIGH TEMPERATURE THERMOPLASTIC, LCP, UL 94V-0, COLOR- BLACK.
- CONTACT: COPPER ALLOY, SELECTIVE GOLD PLATING ON CONTACT AREA, MATTE TIN PLATING 100u" ON SOLDERING AREA.
- SHELL: STEEL (SUS 301), NI PLATING 50u" ON SOLDERING AREA.
- THIS PRODUCT DOESN'T CONTAIN ENVIRONMENTAL HAZARDOUS MATERIALS PER DIRECTIVE 2011/65/EU FOR RoHS.
- RECOMMENDED SD CARD WIDTH IS DIM 9.70<sup>+0.1</sup><sub>-0.05</sub> FOR TEST.
- PRODUCT SPECIFICATION REFER TO : PS-7500.

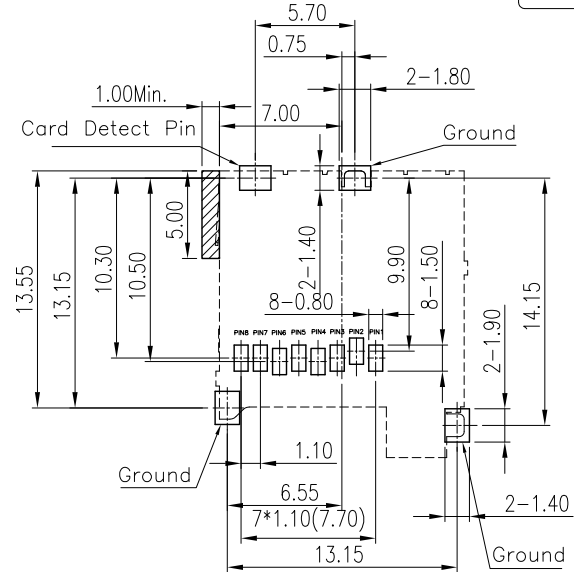


PIN No.	FUNCTION
PIN 1	DAT2
PIN 2	CD/DAT3
PIN 3	CMD
PIN 4	Vdd
PIN 5	CLK
PIN 6	Vss
PIN 7	DAT0
PIN 8	DAT1

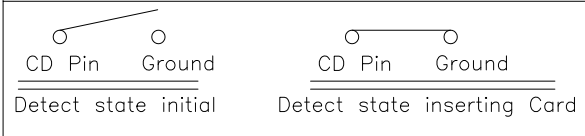
PART NO. GTFP084XXB1E5

CONTACT FINISH  
 2: 10 μ" GOLD  
 3: 15 μ" GOLD  
 4: 30 μ" GOLD

PACKING STYLE  
 1: W/O MYLAR T&R  
 2: W/ MYLAR T&R



RECOMMENDED SOLDER PAD AREA  
 DEVICE KEEP OUT AREA  
 RECOMMENDED PCB LAYOUT  
 (ALL TOLERANCE ARE ±0.05mm)  
 TOP VIEW



TOLERANCE	APPROVALS	DATE	TITLE	UNIT	SIZE	PART No.
X. ±0.30	DRAWN Debby Hung	05/12/2016	MICRO SD NORMAL OPEN TYPE (HEIGHT IS 1.85 MM) (NF 30gf MIN.)	mm	A3	GTFP084XXB1E5
X.X ±0.20	CHECKED Roger Tsai	05/12/2016				
X.XX ±0.10	APPROVED Arron Lin	05/12/2016				
ANGULAR ±1°	DWG TYPE CUST DWG	PROJECT CODE OTHER				
UNLESS OTHERWISE SPECIFIED				SCALE NA	SHEET 1 OF 2	DWG No. GTFP084XXB1E5
						REV. A

**Amphenol**<sup>®</sup>  
 Amphenol Corporation  
 Amphenol Taiwan Corporation