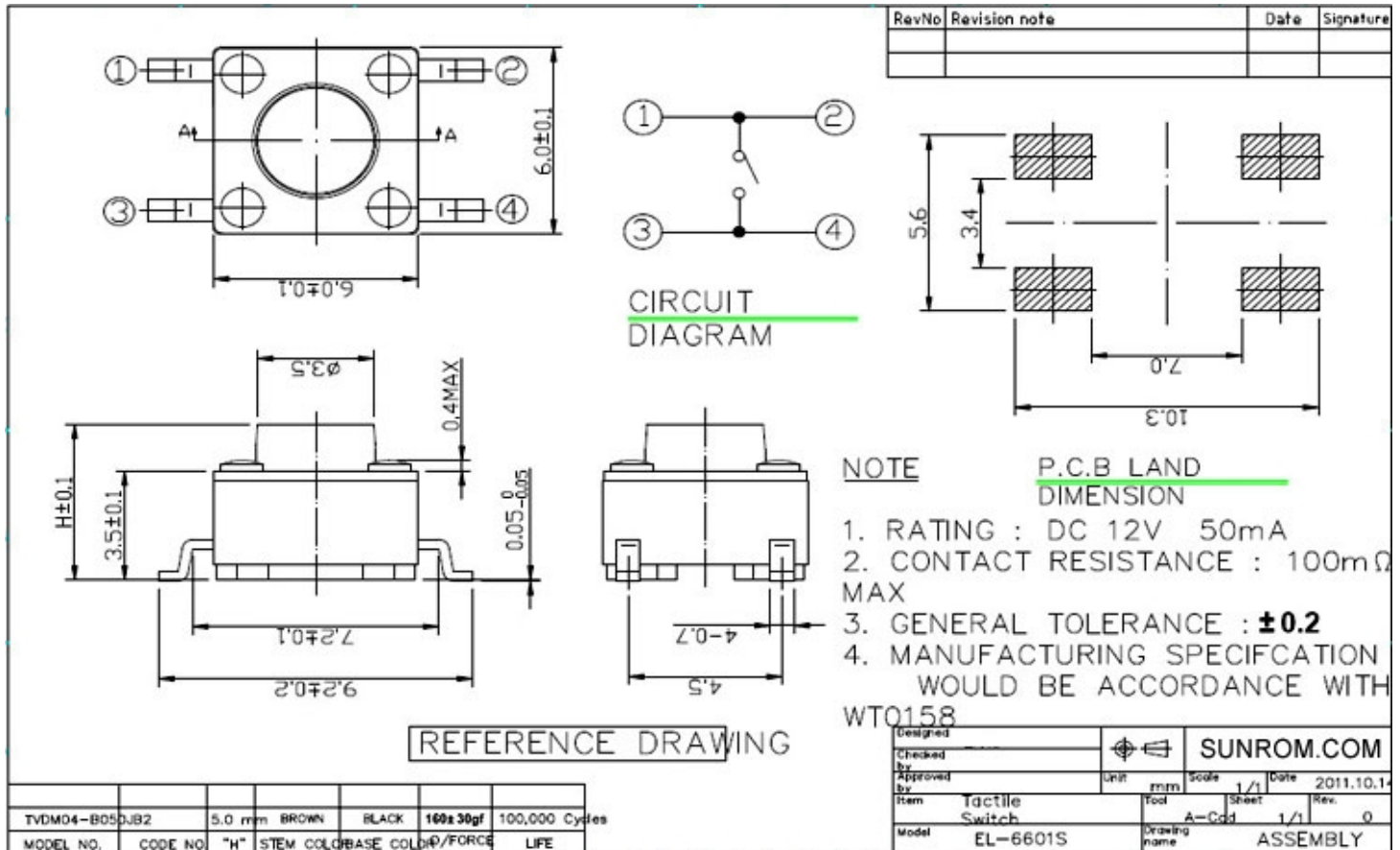


## TACTILE SWITCH 6X6MM SMD

High precision mechanism design offers acute operation and long service life. Features momentary contact, Tactile Feedback, 4 pins, SMD mounting.

### DIMENSIONS



### FEATURES

- Crisp clicking by tactile feedback
- Prevent flux rise by insert-mould terminal
- Snap-in mount terminal
- Various Height Option
- Multicolor Key Cap are also available (Minimum Height required is 6mm)

## SPECIFICATIONS

Product Name	Tactile Switch
Contact Type	Momentary Contact
Current Rating	50mA
Voltage Rating	DC 24V max
Contact Resistance	<100m Ohm
Dimension	6 x 6 mm (L*W)
Material	Plastic, Metal, Electric Parts
Main Color	Black, Silver Tone
Net Weight	4g
Operating Temperature Range	-20 to +70 deg C
Type of Operation	Tactile Feedback
Circuit Configuration	Push-On Momentary, 1 Pole -1 throw
Insulation Resistance	100M ohm Min at 100VDC
Dielectric Withstanding Voltage	250VAC for 1 minute
Contact Bounce	MAX 5ms
Operating Force	~1.0 N
Return Force	~0.5 N
Travel	0.25 mm

## ORDERING DETAILS

Sunrom Part#	Height (h)	Ordering Page
5554	4.3mm	<a href="http://www.sunrom.com/m/5554">http://www.sunrom.com/m/5554</a>
5555	5mm	<a href="http://www.sunrom.com/m/5555">http://www.sunrom.com/m/5555</a>
5556	6mm	<a href="http://www.sunrom.com/m/5556">http://www.sunrom.com/m/5556</a>
5557	7mm	<a href="http://www.sunrom.com/m/5557">http://www.sunrom.com/m/5557</a>
5558	8mm	<a href="http://www.sunrom.com/m/5558">http://www.sunrom.com/m/5558</a>